

+1 (512) 715-9995
 +1 (800) 965-9229 Toll Free
 +1 (512) 715-9954 Fax
 +1 (800) 806-1225 Toll Free Fax

104 John Kelly Drive
 Burnet, TX 78611
 info@stealthproducts.com
 www.stealthproducts.com
 facebook.com/StealthProducts

PO#: Type:

Customer:

Branch: Date:

Contact:

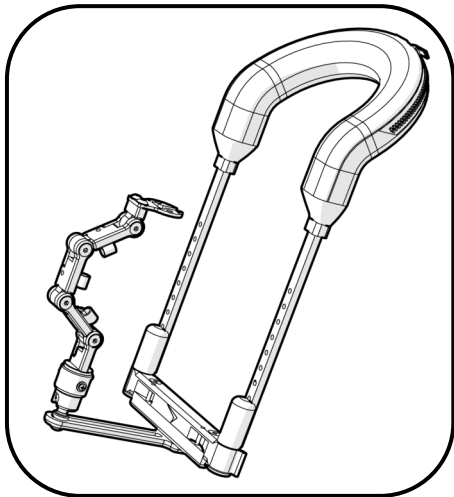
E-mail:

Phone: Fax:

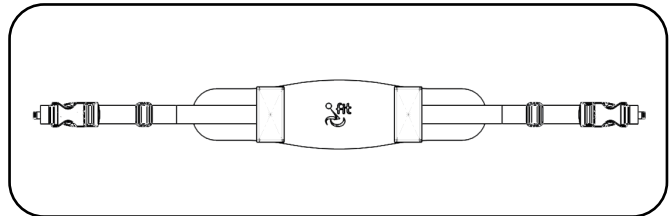


STEP 1: SELECT SIZE

MSRP \$866.00



STEP 2: BELT SIZE



IDCH-SB
Standard Belt



Standard option for IDCH-P, S, & M

IDCH-XLB
Extra Large Belt



Standard option for IDCH-L
Optional for IDCH-M

IDCH-P
(Pediatric)



QTY

IDCH-S
(Small)



QTY

IDCH-M
(Medium)



QTY

IDCH-L
(Large)



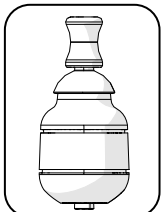
QTY

See page 2 for size chart

STEP 3: SELECT JOYSTICK

Joystick not included in IDCH pricing

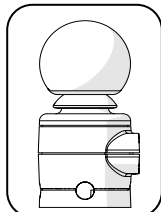
MSRP \$3,229



IDM-MICRO-9



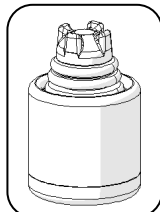
MSRP \$3,229



IDM-MULTI-9



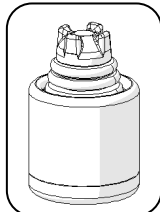
MSRP \$3,964



IDPMP-1



MSRP \$3,229



IDPMP-9

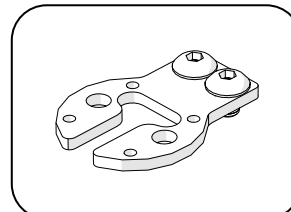


OR

SELECT MOUNTING

Required when not ordering joystick

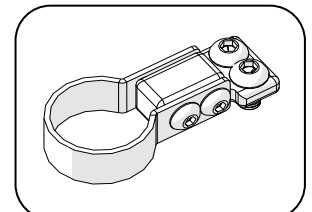
For: IDM-MULTI-9, IDPMP-1, 9



IDCH-JM01



For: IDM-MICRO-9



IDCH-JM02



Mark for:

PO#:



ACCESSORIES

Qty.	PN	Description	MSRP
<input type="checkbox"/>	___ IDCH-FL6	6" Flex tube for mounting accessories	\$42.00
<input type="checkbox"/>	___ IDCH-AFL	(Left) Fiber-Optic on Flex Tube (Requires IC24F-1)	\$289.00
<input type="checkbox"/>	___ IDCH-AFR	(Right) Fiber-Optic on Flex Tube (Requires IC24F-1)	\$289.00
<input type="checkbox"/>	___ IC24F-1	i-Connect 24V Interface & one Fiber Optic Sensor Must select a power source if ordering IC24F-1	\$709.00
<input type="checkbox"/>	___ IC24PS-QL	i-Connect Power Source for Q-Logic	\$294.00
<input type="checkbox"/>	___ IC24PS-RN	i-Connect Power Source for R-Net Electronics	\$294.00
<input type="checkbox"/>	___ IDCH-LINK	Additional Link for Harness	\$53.00
<input type="checkbox"/>	___ IDCH-A1L	(Left) Single Twister Basic Button on Flex Tube	\$415.00

SELECT COLOR **IDM-25** (Black) **IDM-26** (Red) **IDM-27** (Blue) **IDM-24** (Yellow) **IDM-28** (Green)

___ **IDCH-A2R** (Right) Single Twister Basic Button on Flex Tube **\$415.00**

SELECT COLOR **IDM-25** (Black) **IDM-26** (Red) **IDM-27** (Blue) **IDM-24** (Yellow) **IDM-28** (Green)

For IDCH-A1L & A2R, BLACK is standard

REPLACEMENT PARTS

Qty.	PN	Description	MSRP
<input type="checkbox"/>	___ IDCH-PNC	Replacement Collar for IDCH-P	TBD
<input type="checkbox"/>	___ IDCH-SNC	Replacement Collar for IDCH-S	TBD
<input type="checkbox"/>	___ IDCH-MNC	Replacement Collar for IDCH-M	TBD
<input type="checkbox"/>	___ IDCH-LNC	Replacement Collar for IDCH-L	TBD
<input type="checkbox"/>	___ IDCH-PC	Replacement Cover for IDCH-P	TBD
<input type="checkbox"/>	___ IDCH-SC	Replacement Cover for IDCH-S	TBD
<input type="checkbox"/>	___ IDCH-MC	Replacement Cover for IDCH-M	TBD
<input type="checkbox"/>	___ IDCH-LC	Replacement Cover for IDCH-L	TBD
<input type="checkbox"/>	___ IDCH-JM01	Mounting for Multi, PMPJ 1 & 9	\$53.00
<input type="checkbox"/>	___ IDCH-JM02	Mounting for Micro	\$79.00
<input type="checkbox"/>	___ IDCH-SB	Replacement Standard Belt	\$102.00
<input type="checkbox"/>	___ IDCH-XLB	Replacement Extra Large Belt	\$102.00

(Belts)

IDCH-SB (With pediatric collar)	
Min. Circumference	Max. Circumference
27in (68.58 cm)	42in (106.68 cm)
(With small collar)	
Min. Circumference	Max. Circumference
30in (76.2cm)	45in (144.3 cm)
(With medium collar)	
Min. Circumference	Max. Circumference
33in (83.82cm)	48in (121.92 cm)

IDCH-XLB (With medium collar)	
Min. Circumference	Max. Circumference
36in (91.44 cm)	51in (129.54 cm)
(With large collar)	
Min. Circumference	Max. Circumference
39in (99.06 cm)	69in (175.26 cm)

Sizing Specifications

(Collars)

IDCH-P (Pediatric)		IDCH-S	
Max. Neck Width	Max. Neck Circumference	Max. Neck Width	Max. Neck Circumference
3.5in (8.89 cm)	11in (27.94 cm)	4.5in (11.43 cm)	14in (35.56 cm)
Arm Length	Lateral Adjustment	Arm Length	Lateral Adjustment
7in (17.78 cm)	3in (7.62 cm)	9in (22.86 cm)	4in (10.16 cm)

IDCH-M		IDCH-L	
Max. Neck Width	Max. Neck Circumference	Max. Neck Width	Max. Neck Circumference
5.5in (13.97 cm)	17.25in (43.81 cm)	6.5in (16.51 cm)	20.5in (52.07cm)
Arm Length	Lateral Adjustment	Arm Length	Lateral Adjustment
10in (25.40 cm)	5in (10.16 cm)	11in (27.94 cm)	6in (12.70 cm)

